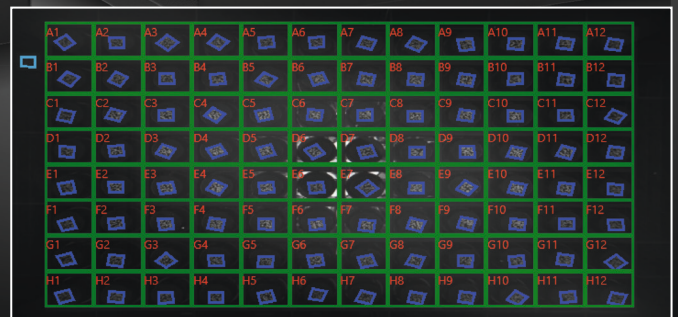
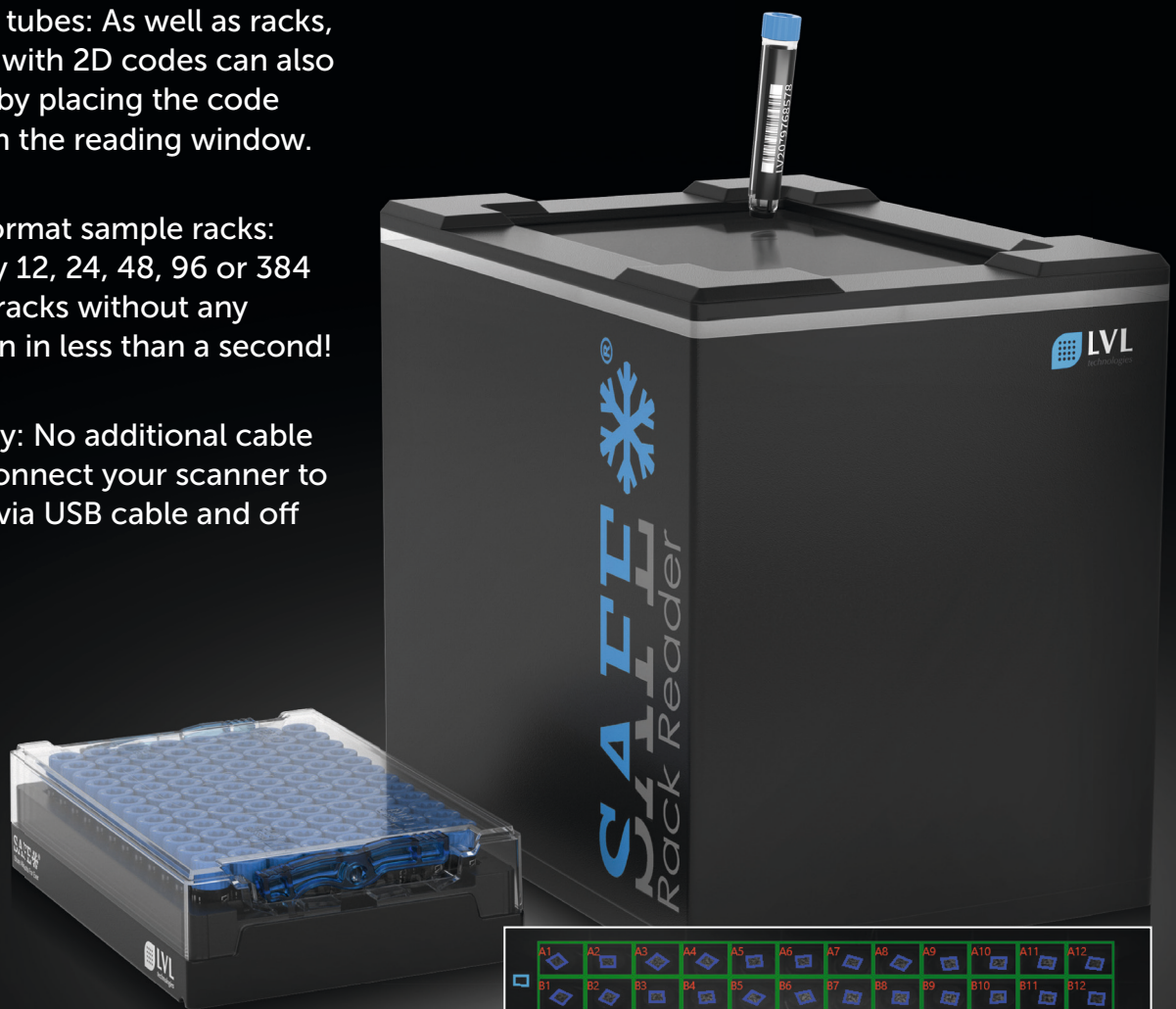


# READ THEM ALL!

**Now available!** LVL fully automated SAFE® Tube AND Tube Rack READER.  
The best choice for decoding your 2D Codes.

- Scans single tubes: As well as racks, single tubes with 2D codes can also be scanned by placing the code anywhere on the reading window.
- Scans SBS format sample racks: Decodes any 12, 24, 48, 96 or 384 format well racks without any configuration in less than a second!
- Power supply: No additional cable required - connect your scanner to your laptop via USB cable and off you go.



Superior features  
located on back

# Specs & features:

- **Automatic Rack Detection:** When a rack is placed on the scanner, built in rack sensors will detect it automatically. Decoding begins when a rack has been detected requiring no further action from the user.
- **Dynamic A1 Positioning:** Built in sensors will detect the A1 position of the rack and adjust the A1 position accordingly.
- **GxP ready:** Including User management and audit trail
- **Smart Signal Lighting System:** Fully configurable RGB LED's indicate the state of the current rack being scanned. E. g red can be used to signify a missing tube.
- **Keyboard Wedge Functionality:** The device acts as a keyboard. Simply connect it to an application and the characters belonging to a code will be sent there directly when it is scanned.
- **Cryoguard Technology:** Cryoguard protects the scanner against frost and condensation when used with cold labware.
- **Multiple Export Options:** CSV, JSON, PDF, XLS, XMS & TCP/IP data export options available.
- **No Mode Changes Required:** Switch between different racks and tubes instantaneously without the need for reconfiguration - software adjusts to optimal reading parameters.
- **LIMS Integration:** Compatible with most available LIMS systems.
- **Robot/Integration Friendly:** Easily set up the Reader with robotics and automation systems.
- **No license key required:** Can be connected to an unlimited number of different PCs.

## Technical details

<b>Dimensions (L x W x H)</b>	180 x 130 x 160 mm
<b>Weight</b>	1.9 kg
<b>Supported OS</b>	Windows 10 & 11
<b>Connectivity</b>	USB 2.0 or 3.0 port
<b>Power</b>	5V via USB connection
<b>Certification</b>	Conforms to CE & FCC & IP65
<b>Warranty</b>	24 months