






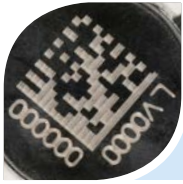


2D Sample Storage and Biobanking Solutions for Demanding Long-term Sample Archiving Requirements

Information	XSX 200	SX 300	MX 500	LX 1000	MI 500	LI 1000	XLX 2000
							
Working Volume with Push Cap with Screw Cap with Heat Seal	170 µl 200 µl 200 µl	250 µl 300 µl 300 µl	400 µl 500 µl 500 µl	900 µl 1,000 µl 1,000 µl	540 µl 450 µl 660 µl	1,070 µl 980 µl 1,230 µl	n/a 2,000 µl n/a
Thread Type	External	External	External	External	Internal	Internal	External
Rack	XSX96S- SBS Rack	SX96S – SBS Rack	MX96S – MX96P – SBS Rack	LX96S – LX96P – SBS Rack	MI96S – MI96P – SBS Rack	LI96S – LI96P – SBS Rack	XL48 – SBS + Cryo Rack
Type of rack lid	Slide Lock	Slide Lock	Slide Lock Push Lock	Slide Lock Push Lock	Slide Lock Push Lock	Slide Lock Push Lock	Slide Lock
Storage Temperature with Screw Cap with Push Cap with Heat Seal	-196°C -80°C -80°C	-196°C -80°C -80°C	-196°C -80°C -80°C	-196°C -80°C -80°C	-196°C -80°C -80°C	-196°C -80°C -80°C	-196°C n/a n/a
Outer Diameter	8.65 mm	8.65 mm	8.65 mm	8.65 mm	8.65 mm	8.65 mm	12.8 mm
Tube Height without Cap with Push Cap with Screw Cap	14.6 mm 15.8 mm 15.9 mm	18.3 mm 19.5 mm 19.6 mm	26.2 mm 27.4 mm 27.6 mm	44.2 mm 45.4 mm 45.5 mm	26.9 mm 27.9 mm 33.2 mm	44.8 mm 45.8 mm 51.1 mm	44.1 mm n/a 45.3 mm
Side code labelling Barcode 1D Data Matrix 2D human eye visible	No No No	No Yes Yes	Yes No Yes	Yes No Yes	Yes No Yes	Yes No Yes	Yes No Yes
Screw Caps Precapped on Cap Rack Bag	Yes Yes Yes	Yes Yes Yes	Yes Yes Yes	Yes Yes Yes	Yes Yes Yes	Yes Yes Yes	Yes Yes Yes
Available presterilized	Yes	Yes	Yes	Yes	Yes	Yes	Yes
Availability	Rack, Bulk	Rack, Bulk	Rack, Bulk	Rack, Bulk	Rack, Bulk	Rack, Bulk	Rack, Bulk
Rack Height with tubes / without Lid	16.1 mm	20.3 mm	28.0 mm	46.1 mm	33.8 mm	51.6 mm	45.7 mm
Rack Height incl. Lid	XSX96S: 22.2 mm	SX96S: 22.2 mm	MX96S: 30.2 mm	LX96S: 48.2 mm	MI96S: 36.3 mm MI96P: 36.2 mm	LI96S: 54.3 mm LI96P: 54.3 mm	XLX48M: 48.4 mm

Tubes



2D code can be complemented with codes visible to the human eye on request.



One instead of two components – no separation of tubes and barcode possible as a result of wet-on-wet patenting process.



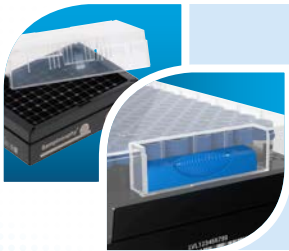
Optional side code labelling: 1D, 2D or visible to the human eye.

System

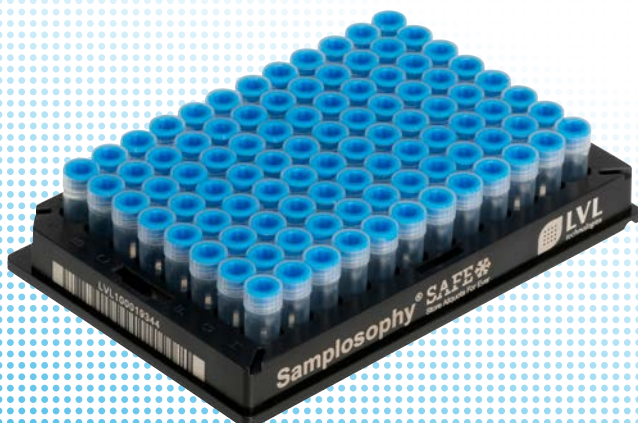


Our promise – your product: we individualise your rack from 1D/2D-number range with your own logo.

Rack



Simple and robust locking mechanism – gently pressing or sliding.



Screw Caps



Internal thread: best sealing- and closing capability through injected TPE compression ring and enlarged contact surface by ring of tube.



External thread: best sealing- and closing capability through injected patented two-phase TPE compression with Liquid Sealing and Vapour Sealing.



Compatible with many cappers/decappers.



Caps also available in cap rack.

Heat Sealing Foil



Cost-efficient sealing option for single use samples.

Push Cap Mat



One mat – 96 caps: the easiest way to close 96 single tubes immediately.